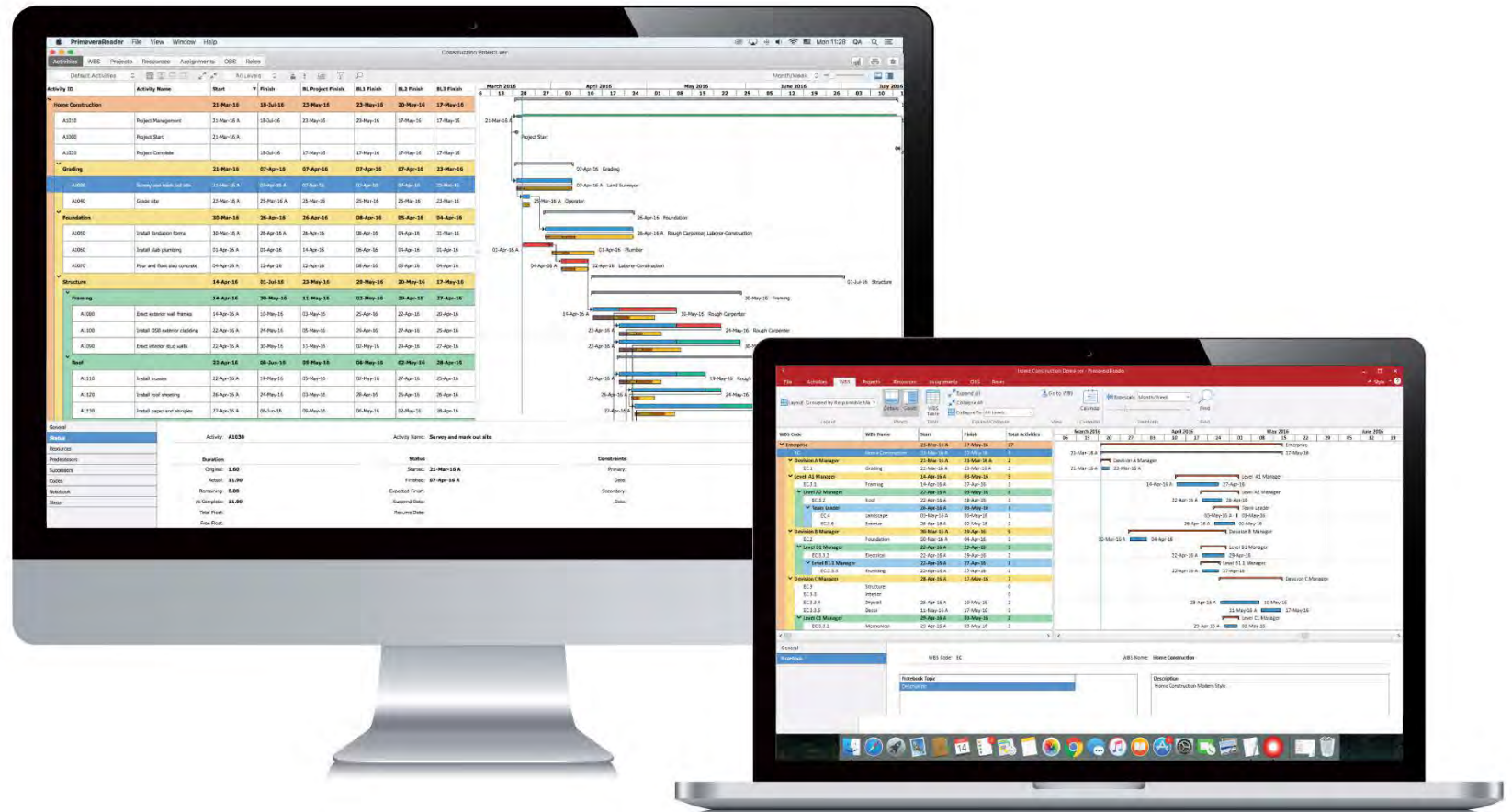


Primavera Reader

Reader for Oracle® Primavera P6 files

Introduction to PrimaveraReader

- Key Features
- Advantages over PDF sharing
- Use Cases
- Clients



The new way of viewing Project Schedules

Introduction to PrimaveraReader

Introduction

PrimaveraReader is a reader for project schedules created with Oracle® Primavera P6. It enables users to open and view project plans exported from Oracle® Primavera P6 in XER or XLS format.

This cost-effective solution is designed to deliver overview of important project plan details among all parties involved that don't need to have an Oracle® Primavera P6 license.

Key Features

- **Activities** – overview of the open project activities
- **Resources** – view the resource structure and details
- **WBS** – Work Breakdown Structure of the project
- **Projects** – view of the Enterprise Project Structure
- **Assignments** – resource allocation and cost info
- **Roles** – view the roles assigned to resources
- **OBS** – Organizational Breakdown Structure
- **Details** – detailed information for selections
- **Baselines** – compare different project versions
- **Custom and Auto filters** – find and filter specified tasks

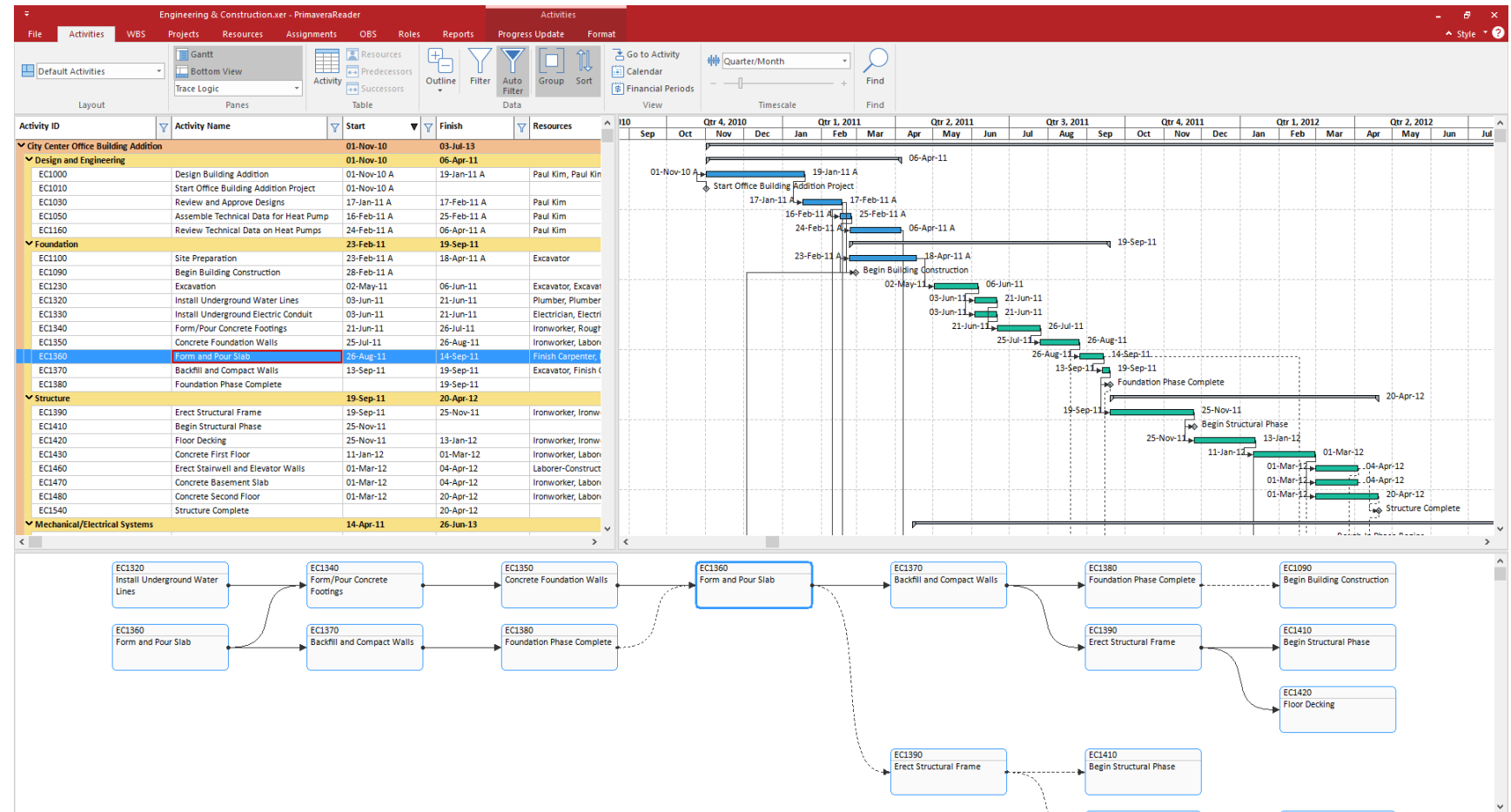
Have a detailed overview and insights of plan's activities

Activities View & Relation to predecessors/ successors

Activities

This feature enables detailed overview and graphical representation of the activities included in the project schedule.

Benefits: Users can view information in the Activities panel, which is divided between the Activity Table on the left side, the Gantt chart on the right side, options ribbon at the top and the details view at the bottom of the screen.



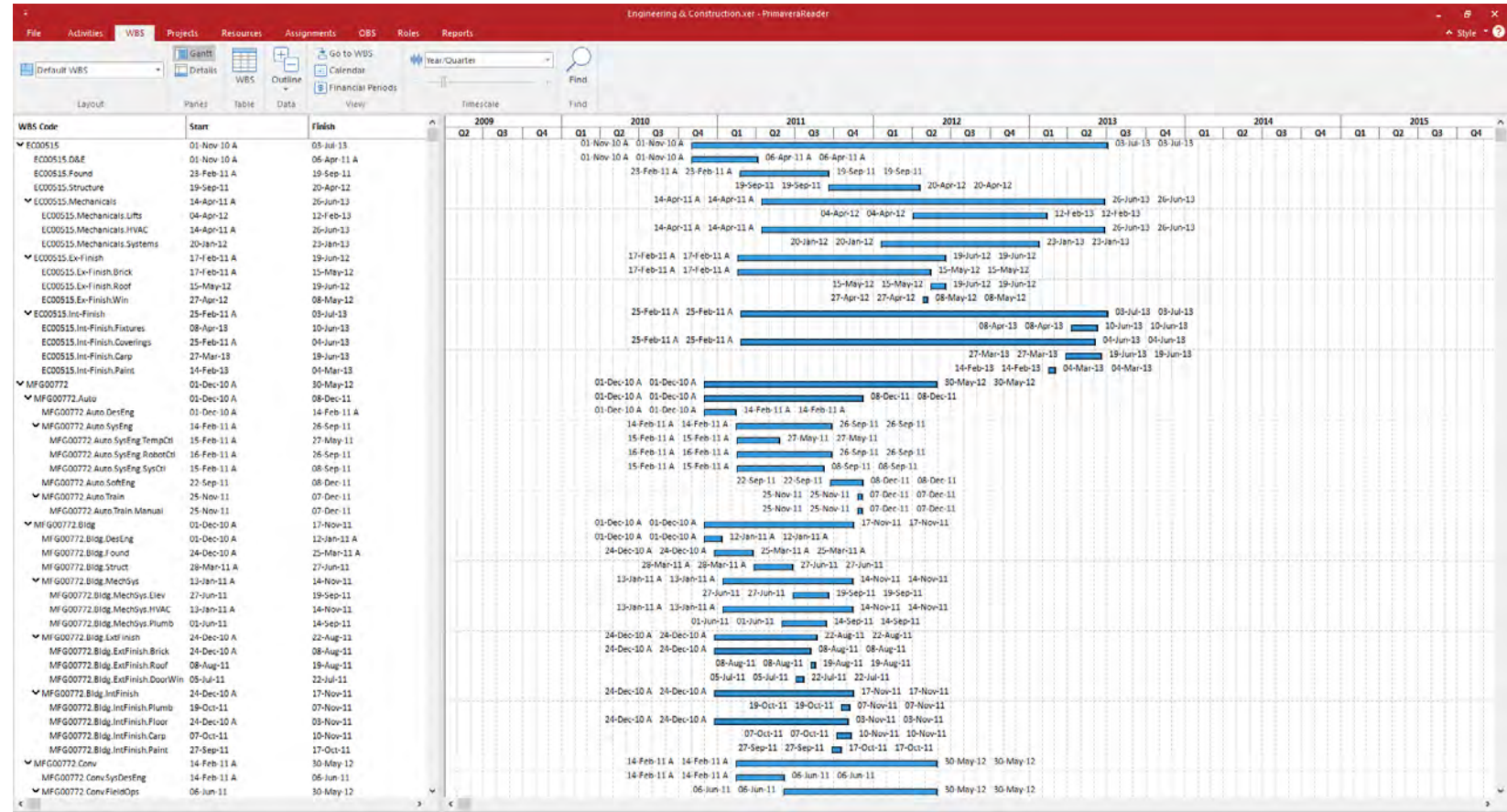
Know your Work Breakdown Structure

WBS View

Work Breakdown Structure

The Work Breakdown Structure view offers an elaborate overview and decomposition of the work to be executed by the project team.

Benefits: Users can preview the Work Breakdown Structure (WBS) for the currently open project accompanied by a Gantt chart on the right.



Preview the resources information in full detail

Resources View

This feature can be hidden by request

Resources

The resource tab shows a list of all resources needed to complete the projects included in the Enterprise Project Structure.

Benefits: Users can view the availability limits, unit prices and the calendar which defines their standard work time and non-work time for each resource.

File

Activities

WBS

Projects

Resources

Assignments

OBS

Roles

Reports

Default Resources

Details

Resource

Outline

Data

Calendar

Resource Shifts

Financial Periods

Find

Resource ID	Resource Name	Resource Type	Primary Role	Default Units	Active	Calendar
E&C Resources						
0	0	Labor		1/d	Yes	E&C Resources - E&C Resources
Trades						
INSP	Inspections	Labor	Electrical Engineer	1/d	Yes	7x24
CreteFinisher	Concrete Finisher	Labor	Trades	0/d	Yes	(New Calendar)
Hydro	Hydroblaster	Labor	Trades	1/d	Yes	5M/6x7D
Operator	Operator	Labor	Trades	0/d	Yes	Trades - 5 Day Workweek
OPTGP	Operations Test Group	Labor		1/d	Yes	Trades - 5 Day Workweek
Elec	Electrician	Labor	Trades	1/d	Yes	Trades - 5 Day Workweek
Paint	Painter	Labor	Trades	1/d	Yes	Trades - 5 Day Workweek
Exc	Excavator	Labor	Trades	1/d	Yes	Trades - 5 Day Workweek
Floor	Floor and Carpet Layer	Labor	Trades	1/d	Yes	Trades - 5 Day Workweek
ImWrk	Ironworker	Labor	Trades	1/d	Yes	Trades - 5 Day Workweek
GenLabor	Laborer-Construction	Labor	Trades	1/d	Yes	Carpenters Shared 5x8
Plumb	Plumber	Labor	Trades	1/d	Yes	Trades - 5 Day Workweek
RCarp	Rough Carpenter	Labor	Trades	1/d	Yes	Carpenters Shared 5x8
FCarp	Finish Carpenter	Labor	Trades	1/d	Yes	Carpenters Shared 5x8
Elev Inst	Elevator Installer	Labor	Trades	1/d	Yes	Trades - 5 Day Workweek
Purchasing						
Purchasing Department	Purchasing Department	Labor		1/d	Yes	Trades - 5 Day Workweek
Project Controls						
Project Controls	Project Controls	Labor	Management	1/d	Yes	Trades - 5 Day Workweek
Engineering						
FieldEng	Field Engineer	Labor	Engineer	1/d	Yes	Trades - 5 Day Workweek
DesEng	Design Engineer	Labor	Engineer	0/d	Yes	Trades - 5 Day Workweek
FieldEngSnr	Field Eng-Senior	Labor	Engineer	1/d	Yes	Trades - 5 Day Workweek
ATM ENG	Automation Systems Engineer	Labor	Engineer	0/d	Yes	Corporate - Standard Full Time
FieldEngAsst	Field Eng-Assistant	Labor	Engineer	1/d	Yes	Trades - 5 Day Workweek
InsEng	Instrumentation Engineer	Labor	Engineer	0/d	Yes	Trades - 5 Day Workweek
HVAC	HVAC	Labor	Trades	0/d	Yes	Trades - 5 Day Workweek
YoungJ	Jeff Young	Labor	Management	1/d	Yes	Trades - 5 Day Workweek
ResnerW	Wendy Resner	Labor	Management	1/d	Yes	Trades - 5 Day Workweek
KimP	Paul Kim	Labor	Management	1/d	Yes	Trades - 5 Day Workweek
Management						
PMs	Project Managers	Labor	Management	1/d	Yes	Trades - 5 Day Workweek

General

Codes

Notes

Resource ID: Hydro

Resource Name: Hydroblaster

Resource Code	Code Value	Description
Location	Europe	Europe
Classification	FTTrade	Trades
Plant	Plant E	Plant E
Department	FAC	Facilities

Calendar

Calendars

Global

Resource

Project

Corporate - Standard Full Time

Trades - 5 Day Workweek

7x24

5x10

6x24

Standard

Calendar Name

Corporate - Standard Full Time

May 2018

Sun

Mon

Tue

Wed

Thu

Fri

Sat

6

7

8

9

10

11

12

13

14

15

16

17

18

19

20

21

22

23

24

25

26

27

28

29

30

31

Standard

Nonwork

Exception

Inherit holidays and exceptions from Global Calendar:

Time Periods

Workweek

OK

Work hours

00:30

30:60

Assignments View

Assignments

The Assignments view shows a display of the resource allocations across all imported project schedules.

Benefits: Users can view resource usage, cost and quantity information in a detailed spreadsheet and can use curves to define any nonlinear distribution of the resource usage.

Engineering & Construction - Primavera Reader

File Activities WBS Projects Resources Assignments OBS Role Reports Progress Update

Default Resource Assignment Spreadsheet Details Assignment Spreadsheet Outline Go to Assignment Calendar Financial Periods New Month

Layout Panel Bible Data View TimeScale

Active	Activity ID	Activity Name	Assigned by	Start	Finish	Budgeted Units	Cum Budgeted Cost	Jan	Feb	Mar	Apr	May	Jun	Jul	Aug	Sep	Oct	Nov	Dec	Jan	Feb	Mar	Apr
Inspection				27-Dec-10	24-Jun-11																		
Yes	A1080	E-101 Inspect Bundle b1 admin1		11-Apr-11	15-Apr-11			1	30	71	73	77	86	41	25	58	91	62	19				
Yes	A1100	E-101 Inspect Shell & P1 admin1		14-Apr-11	21-Apr-11																		
Yes	A1120	E-101 Inspection of Bun admin1		29-Apr-11	30-May-11																		
Yes	A1200	E-101 Hydro Test Tube 1 admin1		01-Jul-11	05-Jul-11																		
Yes	A1220	E-101 Inspection by QA admin1		09-Jul-11	10-Jul-11																		
Yes	A1300	E-102 Inspect Bundle b1 admin1		17-May-11	02-Jun-11																		
Yes	A1320	E-102 Inspect Shell & P1 admin1		14-Jun-11	14-Jun-11																		
Yes	A1340	E-102 Inspection of Bun admin1		07-Jun-11	23-Jun-11																		
Yes	A1420	E-102 Hydro Test Tube 1 admin1		23-Jul-11	27-Jul-11																		
Yes	A1440	E-102 Inspection by QA admin1		29-Jul-11	03-Aug-11																		
Yes	A1520	E-103 Inspect Bundle b1 admin1		30-May-11	17-Jun-11																		
Yes	A1540	E-103 Inspect Shell & P1 admin1		03-Jun-11	24-Jun-11																		
Yes	A1560	E-103 Inspection of Bun admin1		22-Jun-11	14-Jul-11																		
Yes	A1640	E-103 Hydro Test Tube 1 admin1		18-Aug-11	21-Aug-11																		
Yes	A1660	E-103 Inspection by QA admin1		24-Aug-11	27-Aug-11																		

General
Planning:

Budgeted Units: 19
Actual Units: 0
Remaining Early Units: 19

Budgeted Units Time: 0/4
Remaining Units / Time: 0/4

Original Duration: 82
Remaining Duration: 82

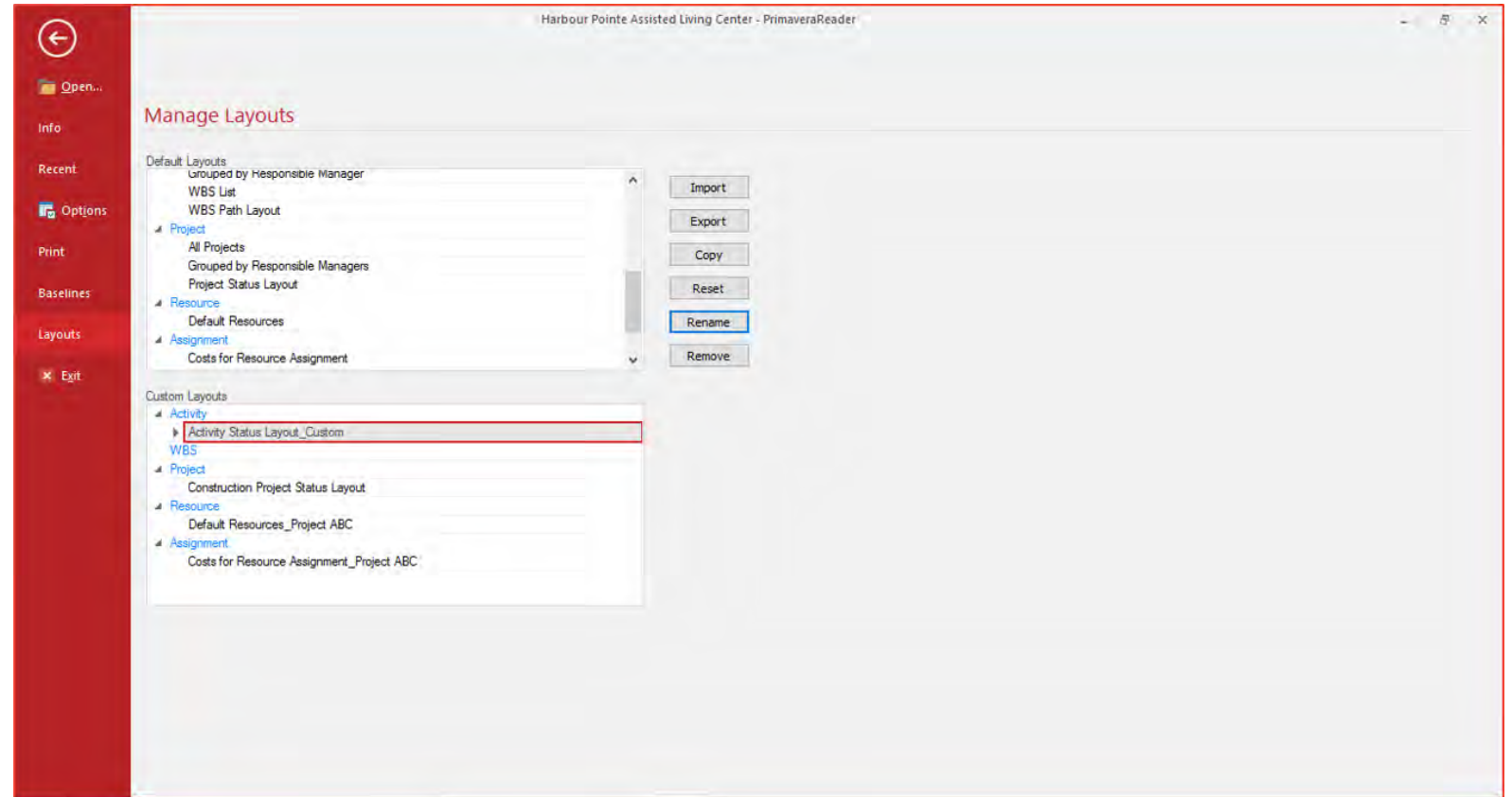
Create custom layout for different types of views

Apply personalized layout for specific view

Custom Layouts

This feature enables you to customize the order and design of different project elements in the appropriate view: Activities, WBS, Projects, Resources and Assignments.

Benefits: You can create custom layouts from default ones or modify layouts that are imported as PLF file, from Oracle® Primavera P6 and specify new arrangement according to the project requirements.



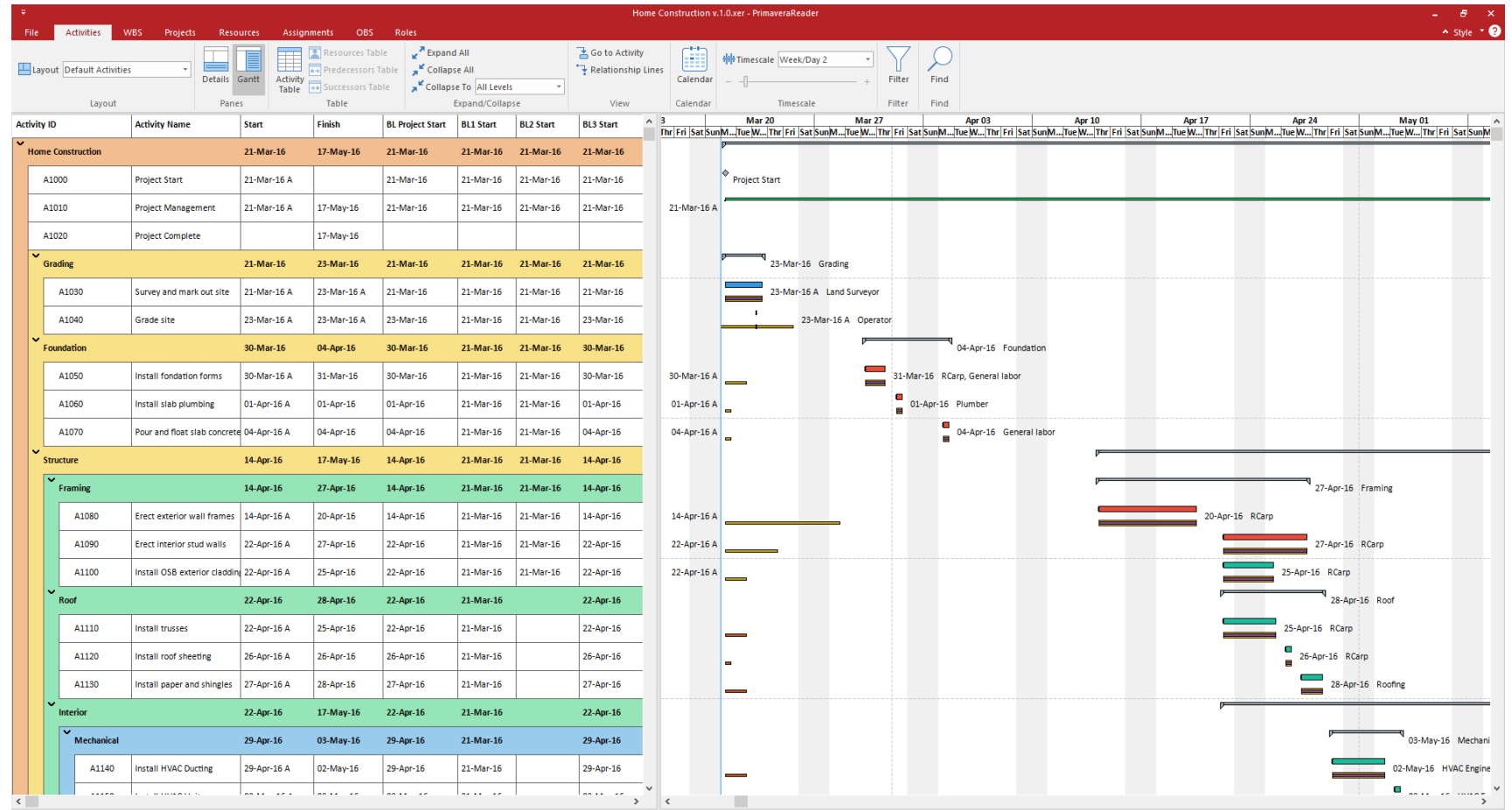
Compare the changes to the previous project plans

Baseline View

Baselines

The baselines functionality enables comparison of up to four updated versions of a project schedule.

Benefits: Users can get a detailed graphical presentation of the aspects that have been changed from the original schedule in the Gantt preview on the right side of the interface.



No worries while working in large plans → filter data of your interest only

Filter + Auto Filters

User-defined Filters & Filters

Auto Filtering allows filtering of the data in one or more columns according to the cell contents.

User-defined filters Allows you to specify exactly which Activities related information you need to view in the Activities table.

Benefits: Users can view and navigate the display of data of interest from the activities in the project schedule, particularly if it is a large schedule.

The screenshot displays the PrimaveraReader interface for a project named 'Engineering & Construction.xer'. The main view is a Gantt chart showing activities from 2010 to 2012. A table on the left lists activities under categories like 'City Center Office Building Addition', 'Design and Engineering', 'Foundation', 'Structure', and 'Mechanical/Electrical Systems'. A 'Filters' dialog box is open, showing a list of filters to apply. The 'Filter' dialog box is also open, showing a list of parameters to filter by, such as 'Activity % Complete', 'Activity Count', 'Activity ID', 'Activity Leveling Prior', 'Activity Name', 'Activity Resource As', 'Activity Status', 'Activity Step Count', 'Activity Type', 'Actual Completed Ac', 'Actual Duration', 'Actual Expense Cost', 'Actual In-Progress Ac', 'Actual Labor Cost', 'Actual Labor Units', 'Actual Material Cost', 'Actual Nonlabor Cost', 'Actual Nonlabor Unit', 'Actual Not-Started Ac', 'Actual This Period Le', 'Actual This Period Ni', 'Actual Total Cost', 'Added By', 'At Completion Durat', 'At Completion Experi', 'At Completion Labor', 'At Completion Mater', and 'At Completion Nonlab'.

Activity ID	Activity Name	Start	Finish	Resources
EC1000	Design Building Addition	01-Nov-10	01-Nov-10	
EC1010	Start Office Building Addition Project	01-Nov-10	01-Nov-10	
EC1030	Review and Approve Designs	17-Jan-11	17-Jan-11	
EC1050	Assemble Technical Data for Heat Pump	16-Feb-11	16-Feb-11	
EC1160	Review Technical Data on Heat Pumps	24-Feb-11	24-Feb-11	
EC1100	Site Preparation	23-Feb-11	23-Feb-11	
EC1090	Begin Building Construction	28-Feb-11	28-Feb-11	
EC1230	Excavation	02-May-11	02-May-11	
EC1320	Install Underground Water Lines	03-Jun-11	03-Jun-11	
EC1330	Install Underground Electric Conduit	03-Jun-11	03-Jun-11	
EC1340	Form/Pour Concrete Footings	21-Jun-11	21-Jun-11	
EC1350	Concrete Foundation Walls	25-Jul-11	25-Jul-11	
EC1360	Form and Pour Slab	26-Aug-11	26-Aug-11	
EC1370	Backfill and Compact Walls	13-Sep-11	13-Sep-11	
EC1380	Foundation Phase Complete	19-Sep-11	19-Sep-11	
EC1390	Erect Structural Frame	19-Sep-11	19-Sep-11	
EC1410	Begin Structural Phase	25-Nov-11	25-Nov-11	
EC1420	Floor Decking	25-Nov-11	25-Nov-11	
EC1430	Concrete First Floor	11-Jan-12	11-Jan-12	
EC1460	Erect Stairwell and Elevator Walls	04-Apr-12	04-Apr-12	
EC1470	Concrete Basement Slab	01-Mar-12	01-Mar-12	
EC1480	Concrete Second Floor	20-Apr-12	20-Apr-12	
EC1540	Structure Complete	20-Apr-12	20-Apr-12	
EC1540	Structure Complete	14-Apr-11	26-Jun-13	

Resource ID	Resource Name	Primary Role
0	Trades	Electrical Engineer
INSP	Inspections	Trades
CreteFinisher	Concrete Finisher	Trades
Hydro	Hydroblaster	Trades
Operator	Operator	Trades
OPTGP	Operations Test Group	Trades
Elec	Electrician	Trades
Painter	Painter	Trades
Exc	Excavator	Trades
Floor	Floor and Carpet Layer	Trades
IronWkr	Ironworker	Trades
GenLabor	General Construction	Trades
Plumb	Plumber	Trades
RCarp	Rough Carpenter	Trades
FCarp	Finish Carpenter	Trades
Elev Inst	Elevator Installer	Trades

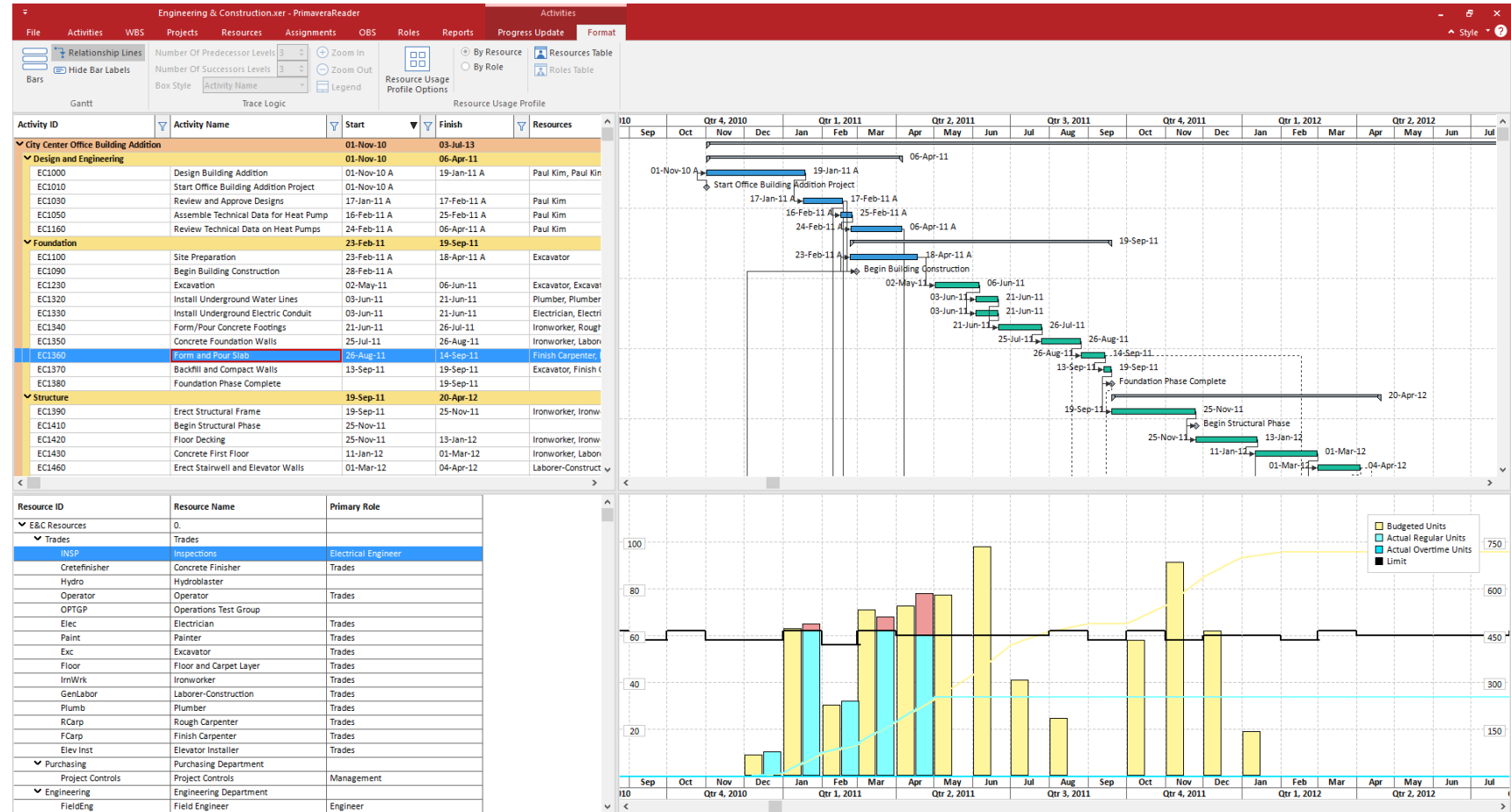
Resource Usage Profile view

Analyze resources and roles units and costs

Various types of information

You can organize the project profiles and specify which information to be displayed in the graph: costs or units.

Benefits: With the use of the Resource Usage Profile, you can analyze the cost and quantity usage for roles and resources, for a single project or for multiple projects.



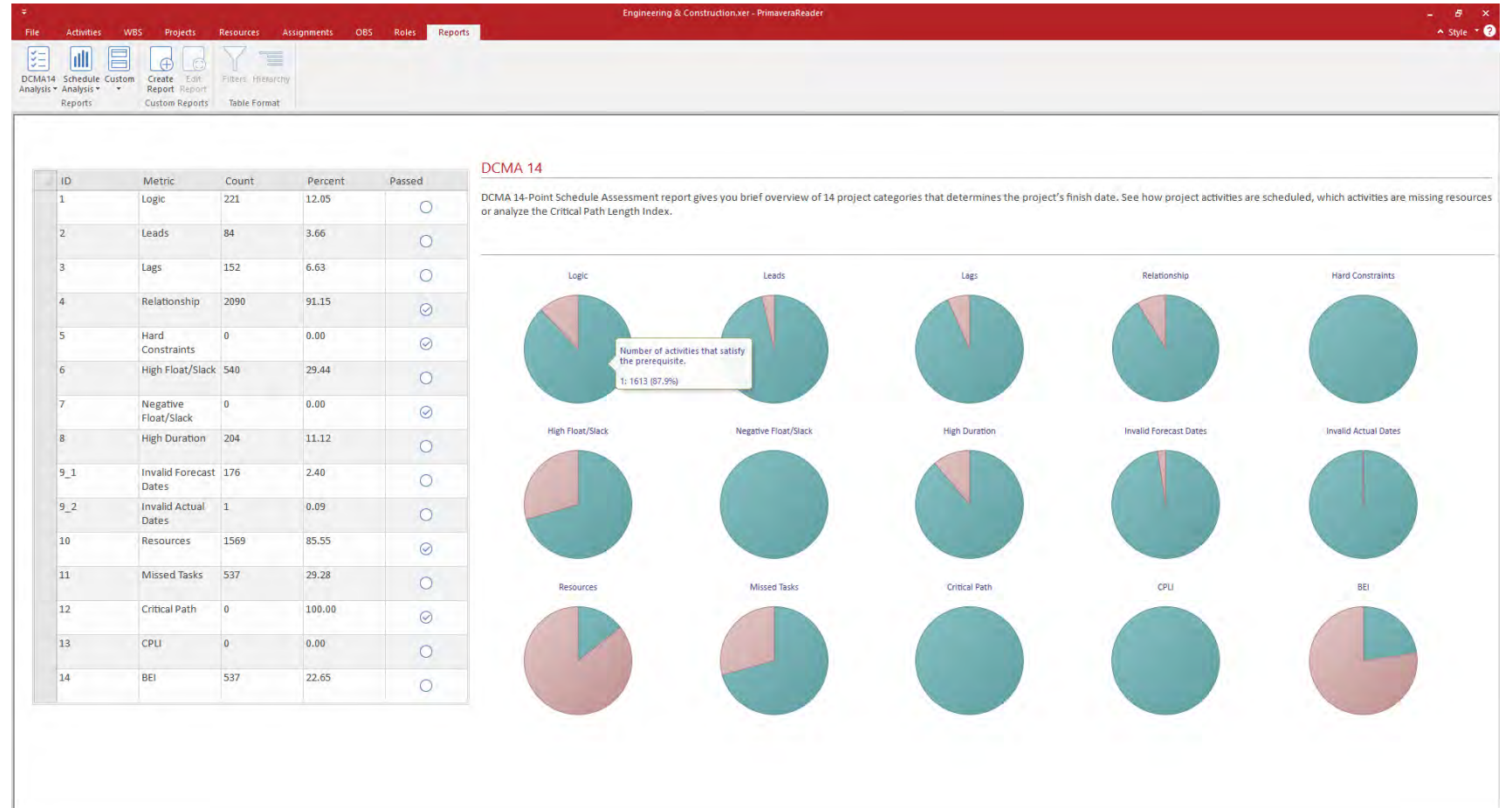
Graphical Reports

Professional graphical reports for all project stakeholders

Reports and dashboards

This feature enables you to work with default report categories or to create your own and share it with your team.

Benefits: You can use the graphical reports to provide business critical information to PMO, project stakeholders and sponsors, making the business reporting process meaningful.



Bar Customization

Create your personal view

Gantt Chart customization

This feature enables you to add new bar types, to remove the unnecessary one or to make modification.

Benefits: You can use the Bars dialog to create new layouts, presenting project information that is not visible and share it with the team.

Bars

Display	Name	Timescale	Start Date	End Date	Filter	Preview
<input checked="" type="checkbox"/>	Remaining Level of Effort	Remaining Bar	Remaining Early...	Remaining Early...	Level of Effort	
<input checked="" type="checkbox"/>	Actual Level of Effort	Actual Bar	Actual Start	Actual Progress ...	Level of Effort	
<input checked="" type="checkbox"/>	Project Baseline	Project Baseline...	BL Project Start	BL Project Finish	Normal	
<input checked="" type="checkbox"/>	Primary Baseline	Primary Baseline...	BL1 Start	BL1 Finish	Normal	
<input checked="" type="checkbox"/>	Second Baseline	Secondary Base...	BL2 Start	BL2 Finish	Normal	
<input checked="" type="checkbox"/>	Third Baseline	Tertiary Baseline...	BL3 Start	BL3 Finish	Normal	
<input checked="" type="checkbox"/>	Actual Work	Actual Bar	Actual Start	Actual Progress ...	Normal	
<input checked="" type="checkbox"/>	Remaining Work	Remaining Bar	Remaining Early...	Remaining Early...	Normal	
<input checked="" type="checkbox"/>	Critical Remaining Work	Remaining Bar	Remaining Early...	Remaining Early...	Normal	
<input type="checkbox"/>	Start Constraint	Remaining Bar	Remaining Early...	Remaining Early...	Has Start Constraint	
<input type="checkbox"/>	Finish Constraint	Remaining Bar	Remaining Early...	Remaining Early...	Has Finish Constraint	
<input checked="" type="checkbox"/>	Baseline Milestone	Primary Baseline...	BL1 Start	BL1 Finish	Milestone	
<input checked="" type="checkbox"/>	Project Baseline Milestone	Project Baseline...	BL Project Start	BL Project Finish	Milestone	
<input checked="" type="checkbox"/>	Secondary Baseline Milestone	Secondary Base...	BL2 Start	BL2 Finish	Milestone	

Bar Style

Shape

Row 1

☐ Show bar for grouping bands
☐ Show bar when collapsed

Color

Bar Labels

Position	Label
----------	-------

Add Label

Remove Label

Add

Delete

Move Up

Move Down

Reset To Default

OK

Cancel

Progress Update: Add/Delete Bars & Gantt Preview

Get detailed information from the field

Update the project plan

This feature enables you to insert proposals for adding or removing activities from project plan.

Benefits: Team members can insert proposal for new activities that are already in progress on the field or to inform the scheduler which tasks are canceled and should be removed from the plan.

The screenshot displays the Primavera Reader interface. The main window shows a project plan with a Gantt chart. The Gantt chart has a timeline from October 2017 to November 2018. The project plan table lists activities with their IDs, names, update start/finish dates, and durations. A dialog box titled 'Add Activity' is open, showing fields for Project, WBS, ID, Name, Proposed Start and Finish, and Relationships.

Activity ID	Activity Name	Update Start	Update Finish	Original Duration
(New Project)				85
Market research				65
A1000	Market Research	20-Mar-18	18-Apr-18	5
A1010	Preparing documentation			26
6128e6f1-1a25-406d-a470-75026a4	DOCUMENT REVIEW	04-Jun-18	31-Jul-18	
8f6e3f0-f001-490e-9505-0d3c56	MONITORING AND CONTR	20-Mar-18	06-Jun-18	
Development				35
A1020	Develop prototype			39
584a2fa0-803a-420d-8f77-899795	NEW ACTIVITY 2	09-May-18	29-Jun-18	

Add Activity Dialog Box Fields:

- Project: (New Project)
- WBS: Development
- ID: ec1f518b-658e-4379-a7a3-5ae90ed1502
- Name:
- Proposed Start and Finish:
 - Start LDF: Update Start
 - Finish LDF: Update Finish
 - Start: 20-Mar-18
 - Finish: 20-Mar-18
- Relationships:
 - Predecessors: Activity ID, Activity Name, Relationship Type
 - Successors: Activity ID, Activity Name, Relationship Type

Why choose PrimaveraReader instead of sharing PDF files

5 main advantages over PDF printed schedules

1. Provide an Interactive overview of the project

Each member has a personalized view, chance to add/remove columns and see relationships inside an elaborate Gantt chart. Also there are Activities, WBS, IPS, resource assignments views, which offer full information regarding the specified topic.

2. Use Custom and Auto filters

The project team members have flexibility when viewing their Activities and Filters, which is a basic feature needed to easily handle plans that contain hundreds of lines / activities.

3. Navigate through predecessors and successors

Team members have a complete overview of the project relations and don't feel isolated from the whole.

4. Work with custom layouts (import .plf files)

The team members can import the company's custom layouts in PLF format or choose how assignment data is displayed in their view. Each layout shows different columns and applies different grouping and sorting of data.

5. Baselines comparison of project schedules

Users can easily spot what has been changed from the previous schedule with the clear visual comparison of the Activity updates from previous .xer file version.

Sharing plans between [Project Scheduler] and [TL & Members]

General Use-case

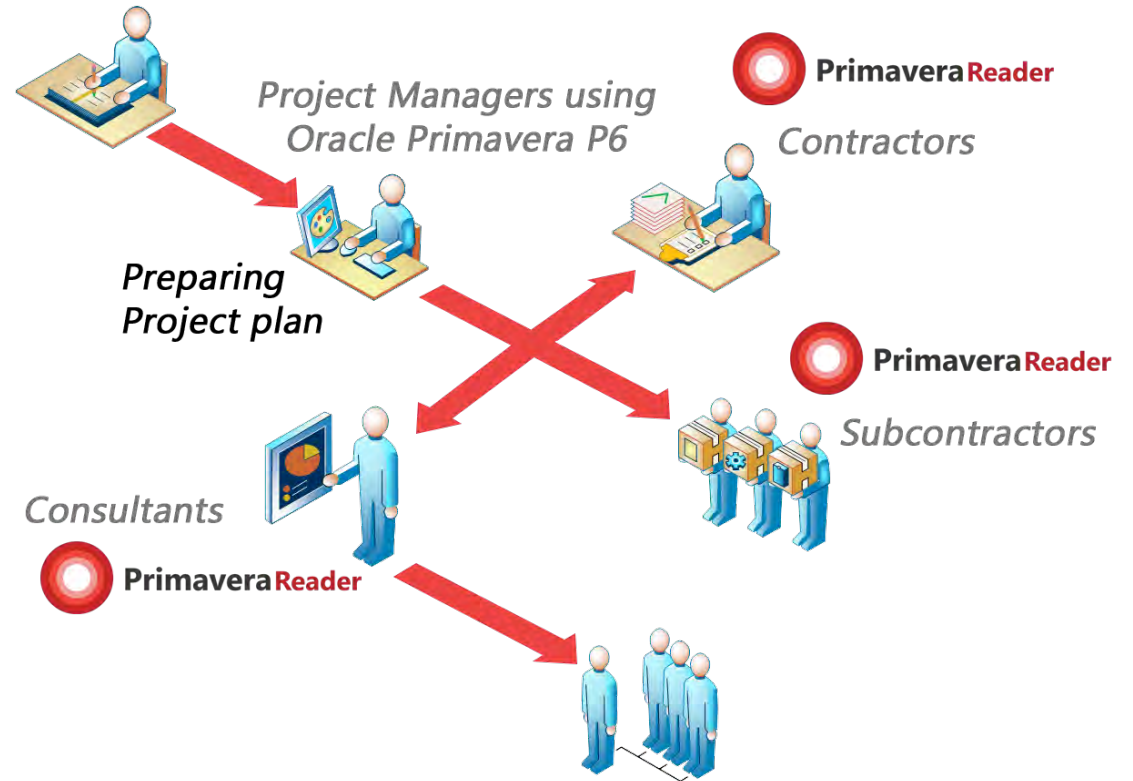
Case:

Project Scheduler is preparing a project plan in Oracle® Primavera P6 and needs to share it to other team members, who only need to view the schedule activities.

Solution:

Use PrimaveraReader as a cost-effective solution for all Project managers, TL and other project participant that don't require editing of the schedule plan.

Users get quick access to activities and gain detailed overview of the progress of activities or responsibilities that have been assigned to them.



Using the PrimaveraReader, Consultants, Subcontractors and Team Leads, can manage deliverables and costs accross the project

Complex plans including [Subcontractors] and [Stakeholders]

General Use-case

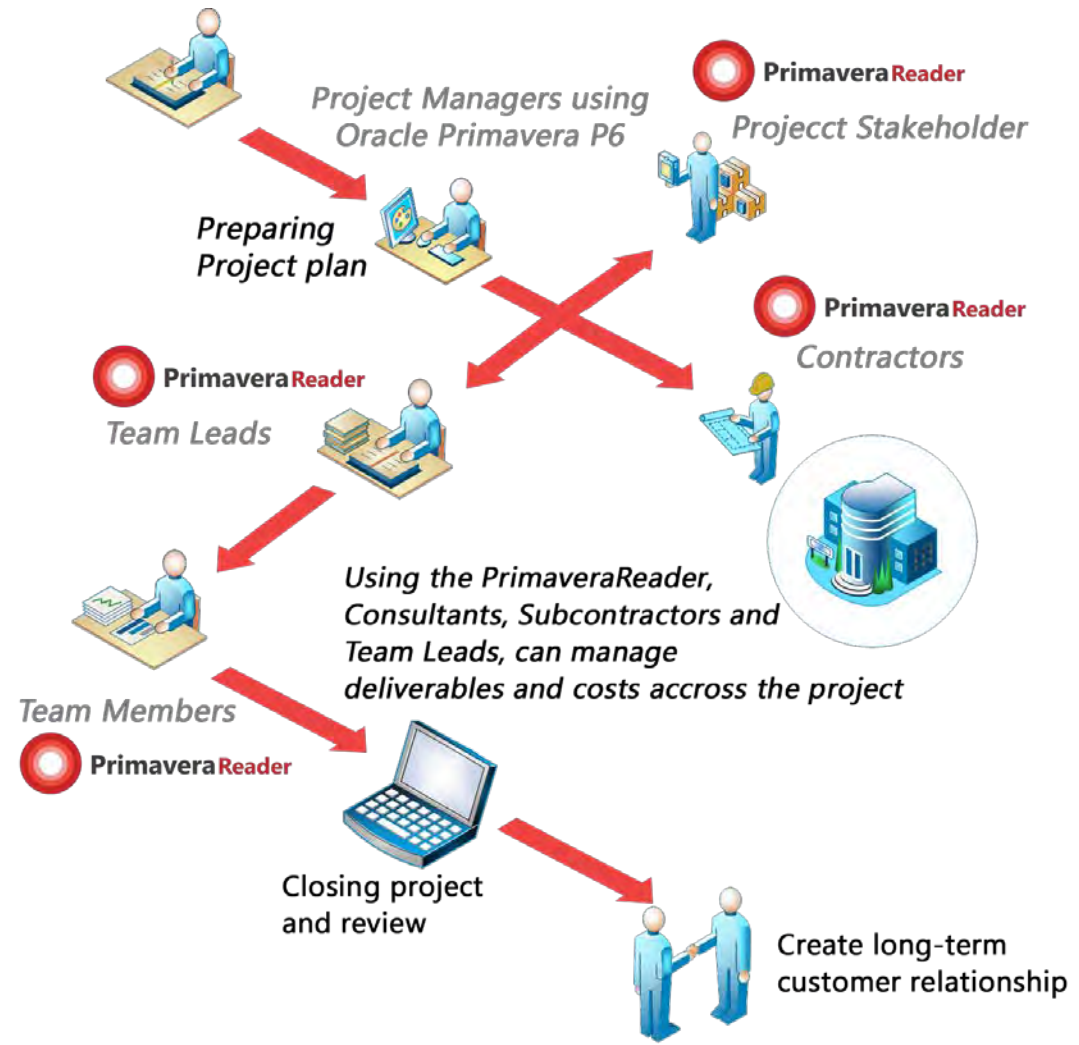
Case:

Along the project team, there is a great number of consultants and subcontractors that are included in the project activities or are included in the management of deliverables.

Solution:

Use PrimaveraReader as an excellent cost-effective solution that will allow detailed view to all the stakeholder, without complex tutorials or worries if some changes by mistake occur.

PrimaveraReader also allows opening multiple projects without the need of importing XER files in P6 Database.



Improve project performance and save on costs

Main reasons for implementing PrimaveraReader

Reasons for implementing PrimaveraReader

- Offers **dynamic working environment** for the whole project team
- Has intuitive user interface [requires no **learning curve**; no **training costs**]
- Provides all of the **important views** from Oracle® Primavera P6
- **Save on software licensing costs**
- Fast view of plan schedules **without import/ export in DB** [open +450K activities in 8 seconds]
- Matching company environment with **custom layouts & filters**
- It replaces the use of alternative **methods to share XER schedules** [like PDF reader]

Our solution is **flexible** in implementing **new features** to meet your organizational requirements!



Experience in Project Viewing tools [+15years] & [+6million users]

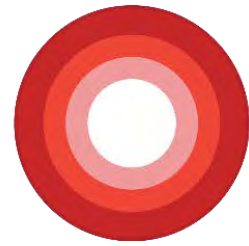
The Team Behind PrimaveraReader

Customers using PrimaveraReader



Customers using our PM tools





PrimaveraReader

Thank You

[Download Free Trial](#) (Windows)

[Download Free Trial](#) (Mac OS X)

For more details, please contact us at: sales@primaverareader.com or visit

www.primaverareader.com